

EPA, Environmental Justice & Burning Our Future

Webinar, July 21 2014



www.no-burn.org

Global Alliance for Incinerator Alternatives

- Over 800 community groups and grassroots activist networks in 100 countries
- Stopping pollution on the frontlines
- Promoting community solutions for zero waste, worker rights, environmental justice



Biomass Carbon Neutrality Myth

- Biomass defined broadly: wood waste, agricultural waste, municipal waste, paper, biosolids
- Biomass fuels are not renewable
 - More carbon-intensive than coal
 - Several studies have shown that CO₂ from biomass fuels would take decades/centuries to be naturally sequestered
 - EPA Science Advisory Board found "carbon neutral" assumption to be deeply flawed.
 - In July 2013, the U.S. Court of Appeals struck down EPA's exemption for biogenic CO₂ sources.

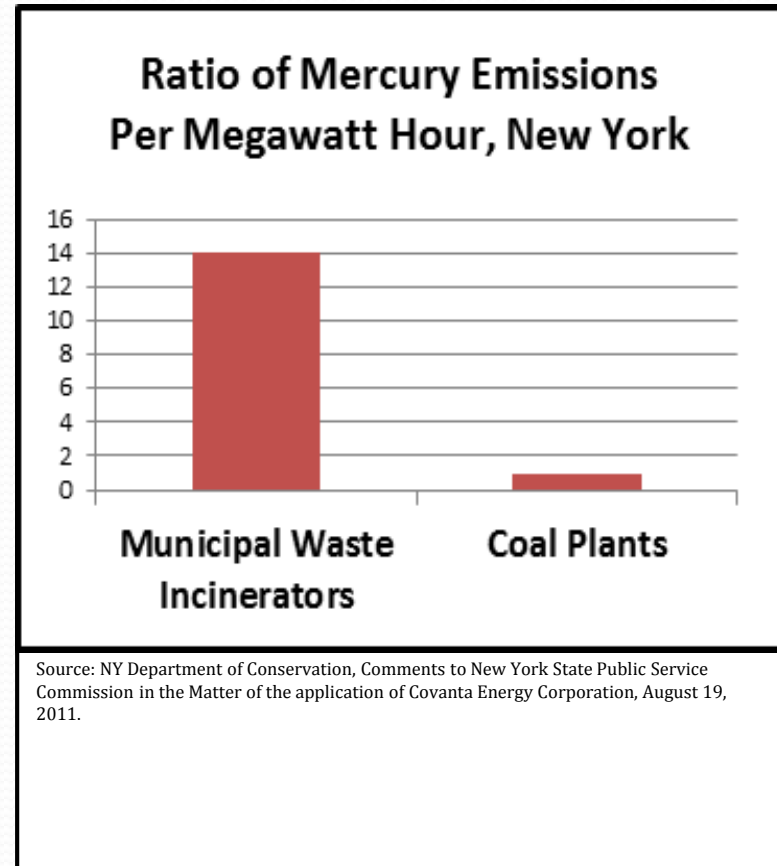
Fatal Flaws with EPA Rule

- Would exacerbate present EJ burdens by incentivizing dirty, toxic and carbon-intensive biomass energy
 - Makes misleading claims about benefits of burning biomass
 - Supports State RPS, incinerators receive RE credits
 - Supports new regulatory loopholes for burning waste
 - Supports carbon market investments in dirty energy

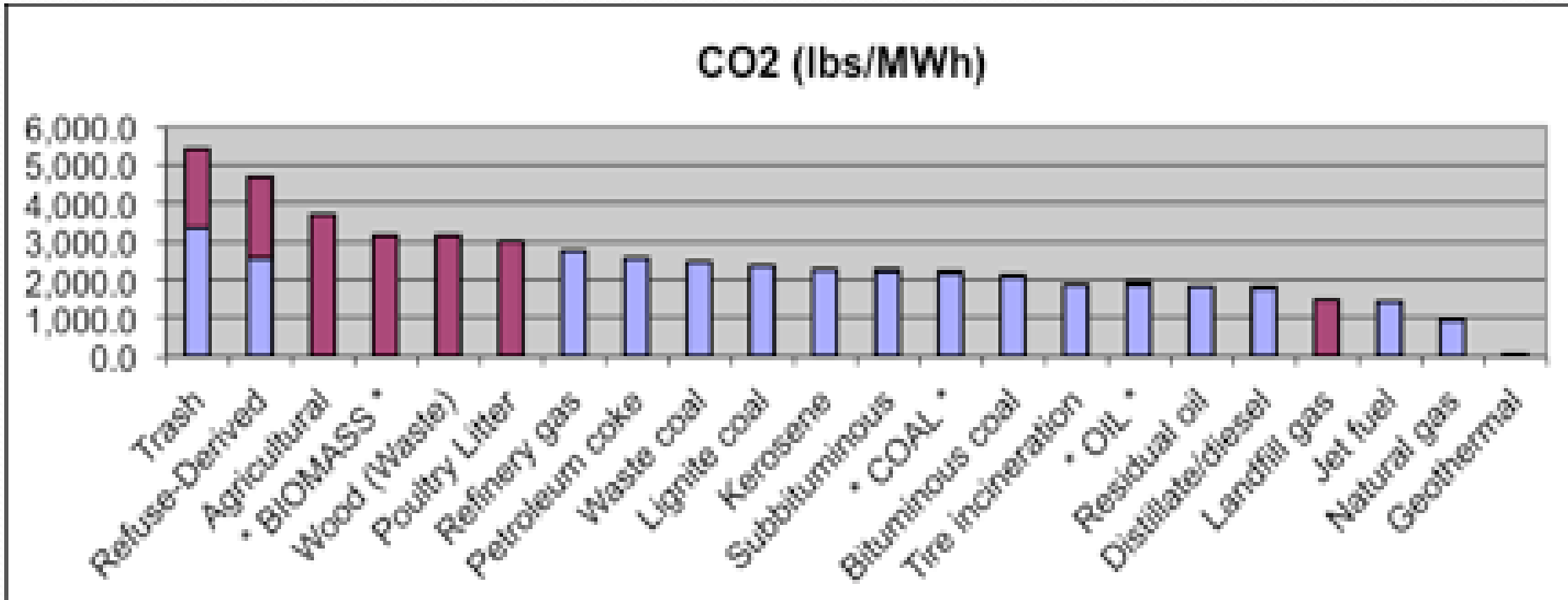
Environmental Justice Concerns

WASTE INCINERATOR POLLUTION

- **DIOXINS**
- **PCBs**
- **CADMIUM**
- **ARSENIC**
- **CHROMIUM**
- **MERCURY**
- **LEAD**
- **ACIDIC GASES**
- **PARTICULATE MATTER**



GHG Emissions



U.S. Environmental Protection Agency, eGRID database, May 10, 2012.
Compiled by Energy Justice Network

Electricity Generation Costs

| Technology/Fuel | Nominal Facility Capacity (kW) | Capital Cost (\$/kW) | Fixed O&M (\$/kW-yr) | Variable O&M (\$/MWh) |
|---------------------------|--------------------------------|----------------------|----------------------|-----------------------|
| Advanced Pulverized Coal | 650,000 | 3,167 | 35.97 | 4.25 |
| Advanced Nuclear/Uranium | 2,236,000 | 5,339 | 88.75 | 2.04 |
| Waste Incineration | 50,000 | 8,232 | 373.76 | 8.33 |
| Photovoltaic/Solar | 150,000 | 4,755 | 16.70 | 0 |
| Onshore Wind | 100,000 | 2,438 | 28.07 | 0 |

U.S. Energy Information Administration, *Updated Capital Cost Estimates for Electricity Generation Plants*, November 2010.

Burning Public Money

- Detroit., MI \$ 1.2 Billion
- Harrisburg, PA Section 9
- New Jersey bailouts

Harrisburg's bankruptcy

Money up in smoke

An incinerator brings Pennsylvania's capital close to fiscal ruin

Oct 29th 2011 | HARRISBURG | from the print edition



70



13

THE city is beautiful. Some of its architecture is spectacular; the dome of the state capitol resembles a Vatican basilica. The Susquehanna river flows impressively alongside Front Street. But Pennsylvania's capital has hellish financial problems. Because of a crippling \$300m debt connected to the city-owned rubbish incinerator, Harrisburg faces bankruptcy—and may well be taken over by the state.

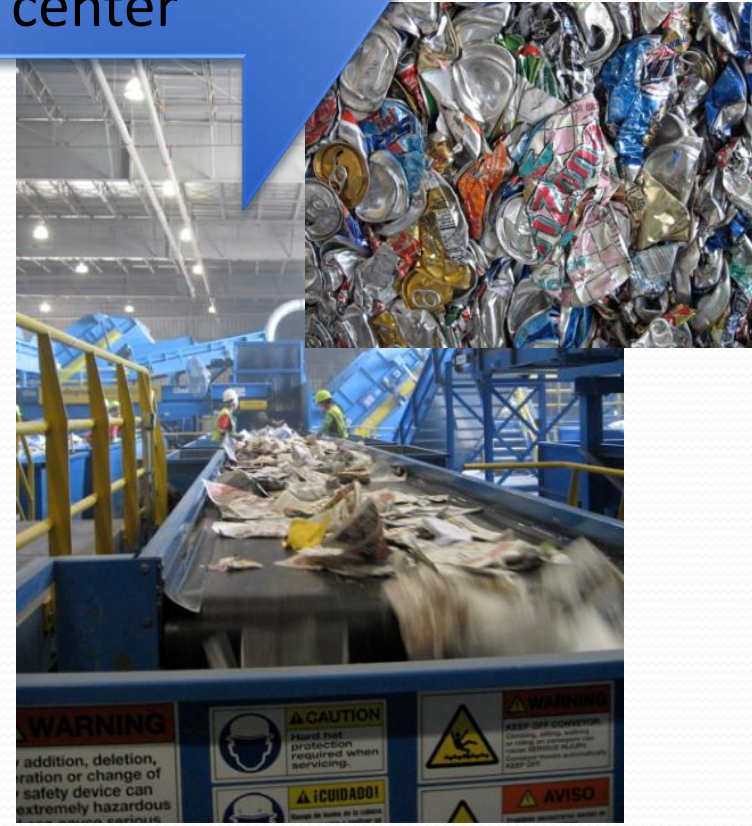
For over a year the mayor and the seven-member city council have wrangled over the debt. The city council has already rejected at least three fiscal plans from



...When there clearly are better alternatives

\$600 million for
1,500 ton-per-
day incinerator

\$8 million for
1,500 ton-per-
day recycling
center



Solutions Require Alignment with Justice

- Systems Change not Symptom Fix
- Solve Pollution & Poverty Together
- Local, Community-Led Solutions

